

PART OF THE S.W. 1/4 OF SECTION 22, T.7N., R.1E., S.L.B. & M.

## PATIO SPRINGS UNIT NO. 1

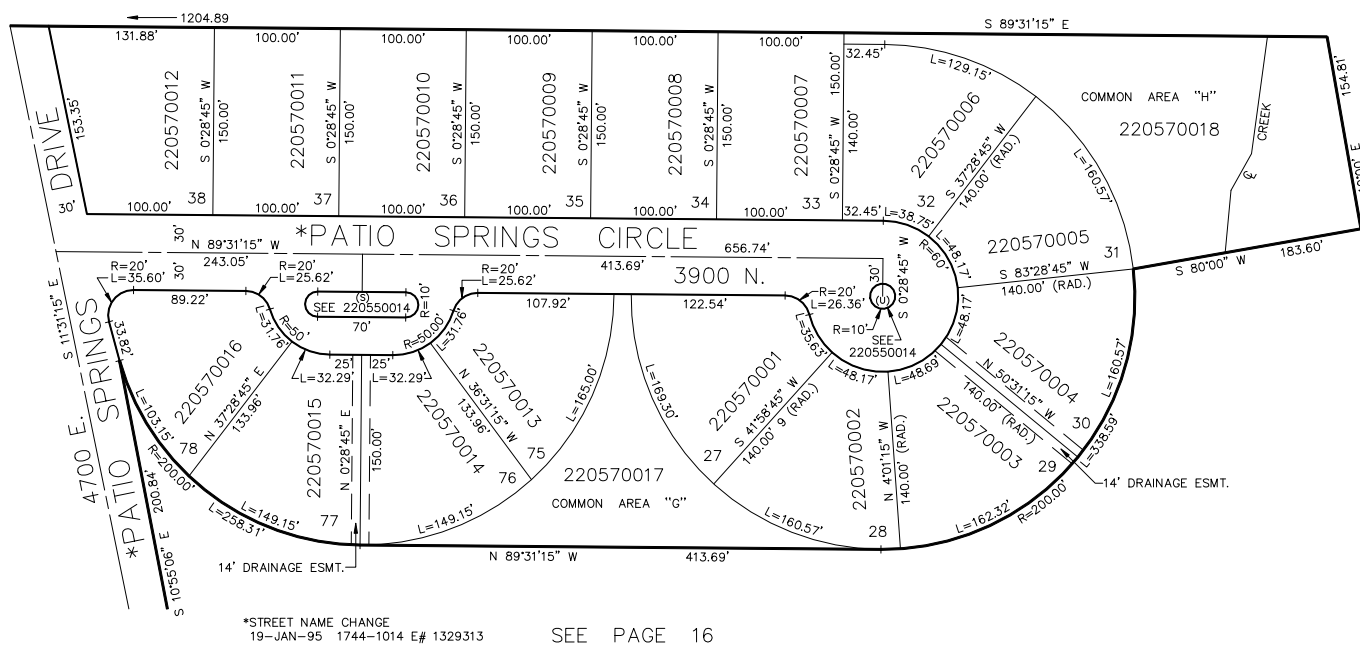
LOTS 27 TO 38, 75 TO 78, G & H

IN WEBER COUNTY

SCALE 1" = 80'

TAXING UNIT: 317

SEE PAGE 17



FOR COMPLETE ENG. DATA  
SEE DEDICATION PLAT IN  
BOOK 16, PAGES 52 & 53